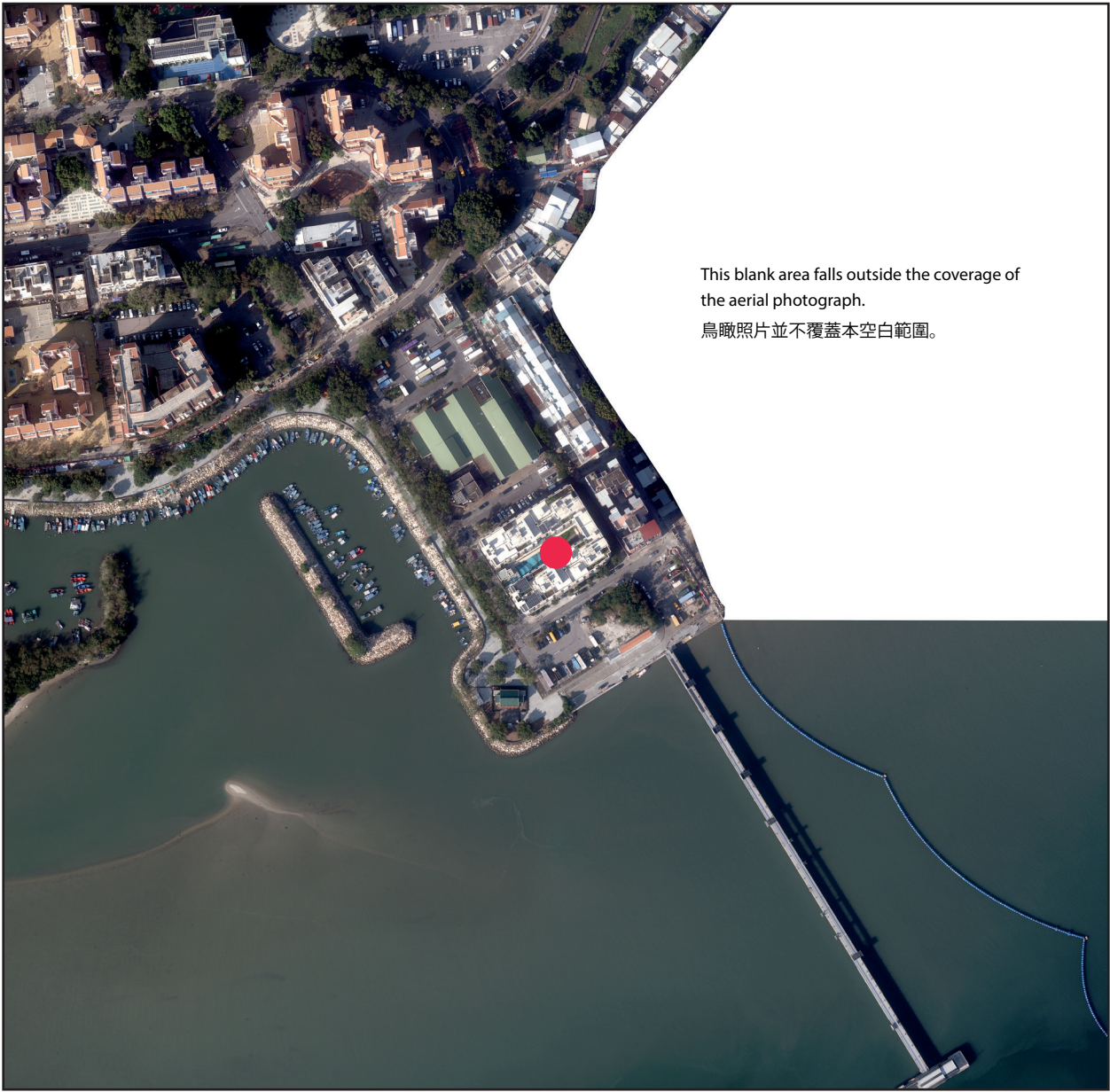


AERIAL PHOTOGRAPH OF THE DEVELOPMENT

發展項目的鳥瞰照片



Location of the Development
發展項目的位置

Survey and Mapping Office, Lands Department, The Government of HKSAR© Copyright reserved – reproduction by permission only.

香港特別行政區政府地政總署測繪處©版權所有，未經許可，不得複製。

Adopted from part of the aerial photo taken by the Survey and Mapping Office of Lands Development at a flying height 6,900 feet dated 26th November 2021, with photo No. E141652C_R.

摘錄自地政總署測繪處於2021年11月26日在6,900呎飛行高度拍攝的鳥瞰照片，編號為E141652C_R。

Note:

1. Due to irregular boundary of the Development, this aerial photo has shown more than the area required under the Residential Properties (First-hand Sales) Ordinance.
2. Copy of the aerial photograph of the Development is available for free inspection at the sales office during opening hours.
3. The Vendor advises prospective purchasers to conduct an on-site visit for a better understanding of the Development site, its surrounding environment and the public facilities nearby.

附註：

1. 由於發展項目的不規則邊界，此鳥瞰照片所顯示的範圍超過《一手住宅物業銷售條例》的規定。
2. 發展項目的鳥瞰照片之副本可於售樓處開放時間內免費查閱。
3. 賣方建議準買家到有關發展地盤作實地考察，以對該發展地盤、其周邊地區環境及附近的公共設施有較佳了解。